



PROVIDENCE RIVER PEDESTRIAN BRIDGE

PUBLIC MEETING

City of Providence
Department of Planning + Development

LOOKING BACK

2009- Project for Public Spaces (PPS) came to Providence to develop preliminary ideas for waterfront parks

2009 - I-195 Pedestrian Bridge Committee began to meet to begin thinking about design and programming concepts for the pedestrian bridge

2010- City decided to hold design competition and created Selection Committee

2010 - City issued an RFQ for design teams and then issued RFP to 11 finalists

2010 – Final design was selected

Since 2010 – Advanced from conceptual design, integrated design with emerging plans for East and West Side waterfront parks

Now at Pre-90% design

Construction will begin in Spring of 2015

DESIGN CONSIDERATIONS

- Must incorporate the five existing piers
- Must be bicycle friendly and ADA compliant
- Incorporated into design of waterfront parks
- Allow for gathering spaces on bridge
- Consideration of views
- Durability of materials
- Design themes – city's history, innovation, creativity, design excellence

SELECTION COMMITTEE

- Rhode Island School of Design Provost (Chair)
- Director of Rhode Island Department of Transportation
- City of Providence Superintendent of Parks
- City of Providence Director of Planning
- Assistant Vice President, Planning, Design and Construction, Brown University
- Private Business Representative Downtown Providence
- Vice President of the Rhode Island Chapter of AIA
- President of the Fox Point Neighborhood Association
- Vice President of the Jewelry District Association
- Executive Director, Rhode Island Historic Preservation and Heritage Commission

DESIGN COMPETITION SUBMISSION



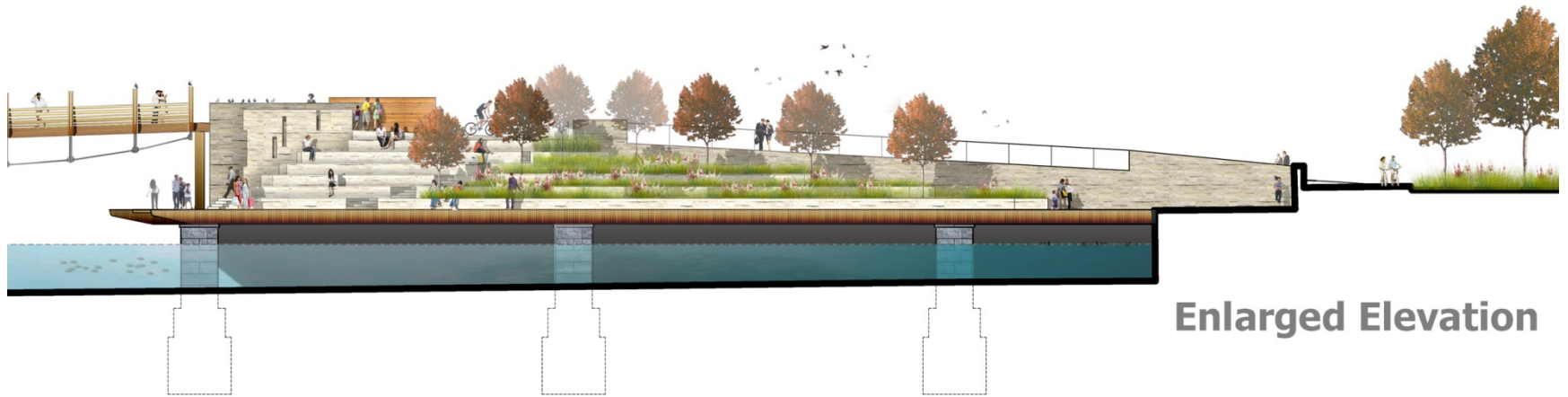
PROVIDENCE RIVER PEDESTRIAN BRIDGE



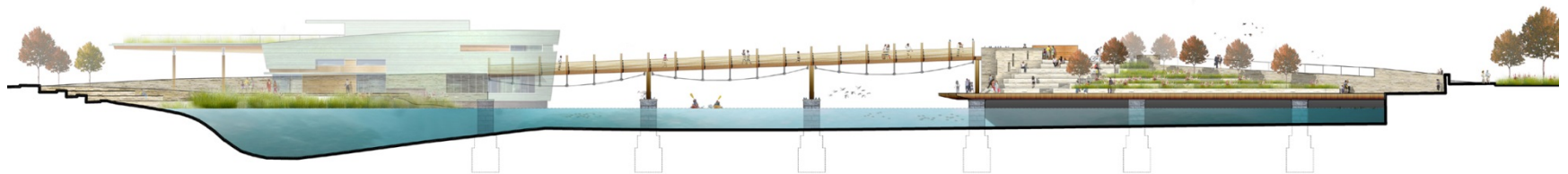
PROVIDENCE RIVER PEDESTRIAN BRIDGE

Team 10

PROVIDENCE RIVER PEDESTRIAN BRIDGE



Enlarged Elevation



South Elevation

Team 10

KEY CHANGES SINCE COMPETITION

- Reduced overall size of bridge – total square footage of bridge deck
- Eliminated event space at lower level
- Eliminated walkway from east side to lower level space
- Added seating elements -- serve as lighting elements
- Added stairs to access two piers on east side

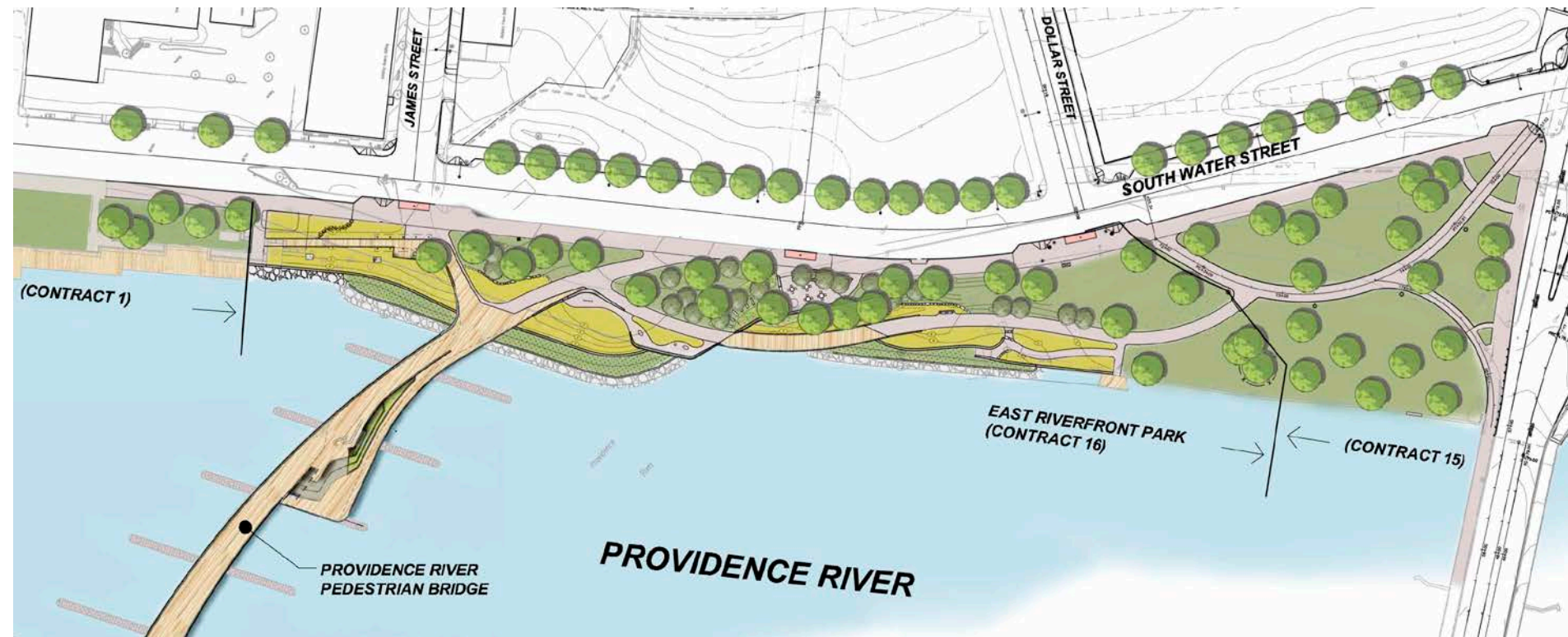
DESIGN RETAINS THE ESSENTIAL CHARACTER OF THE ORIGINAL CONCEPT

INCORPORATION WITH WEST & EAST SIDE PARKS



PROVIDENCE RIVER PEDESTRIAN BRIDGE

EAST SIDE RENDERED PLAN



WEST SIDE RENDERED PLAN



VIEW FROM BRIDGE LANDING – WEST SIDE PARK



OVERALL PLAN



1 | Upper Bridge Deck

4 | Lower Bridge Deck

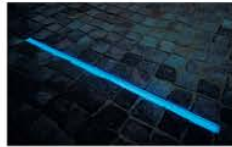
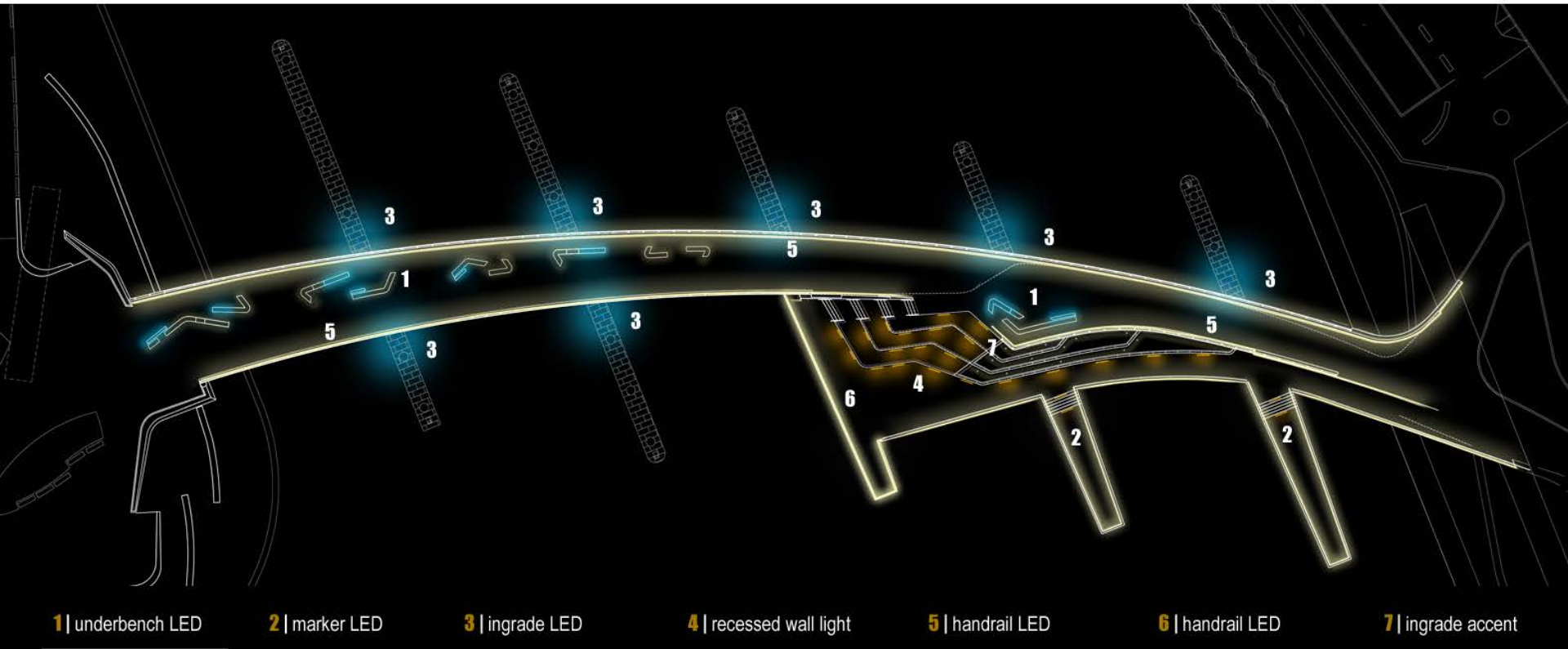
2 | Upper Bridge Bench Seating

5 | Fishing Pier

3 | South Terrace Deck

6 | South Terrace Planter

LIGHTING SCHEME



BENCH AND LIGHTING ELEMENTS



PROVIDENCE RIVER PEDESTRIAN BRIDGE

BENCH AND LIGHTING ELEMENTS



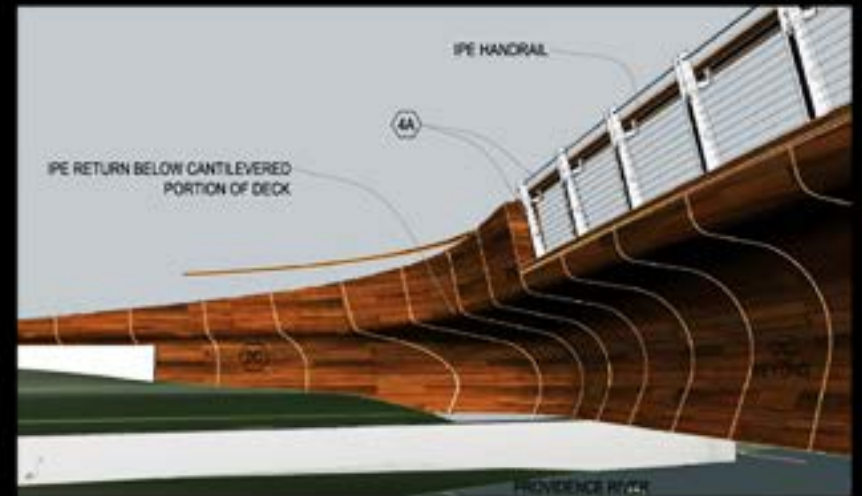
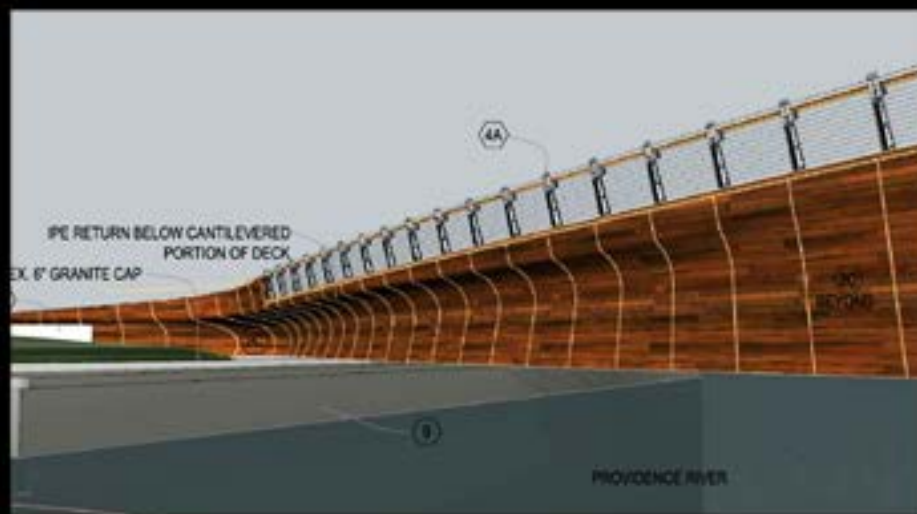
PROVIDENCE RIVER PEDESTRIAN BRIDGE

BENCH AND LIGHTING ELEMENTS



PROVIDENCE RIVER PEDESTRIAN BRIDGE

VIEW- NORTH SIDE OF EAST ABUTMENT



VIEW LOOKING WEST



PROVIDENCE RIVER PEDESTRIAN BRIDGE

VIEW LOOKING EAST



PROVIDENCE RIVER PEDESTRIAN BRIDGE

BUDGET AND COST ESTIMATE

Listed in the State Transportation Improvement Program (TIP) for \$6M

Current budget estimate is \$5.5M

OWNERSHIP AND MAINTENANCE

Once constructed, bridge will be owned by the City of Providence

Ongoing maintenance a priority, are working through ideas with I-195 Commission and other partners on best plan to ensure bridge will be maintained in excellent condition

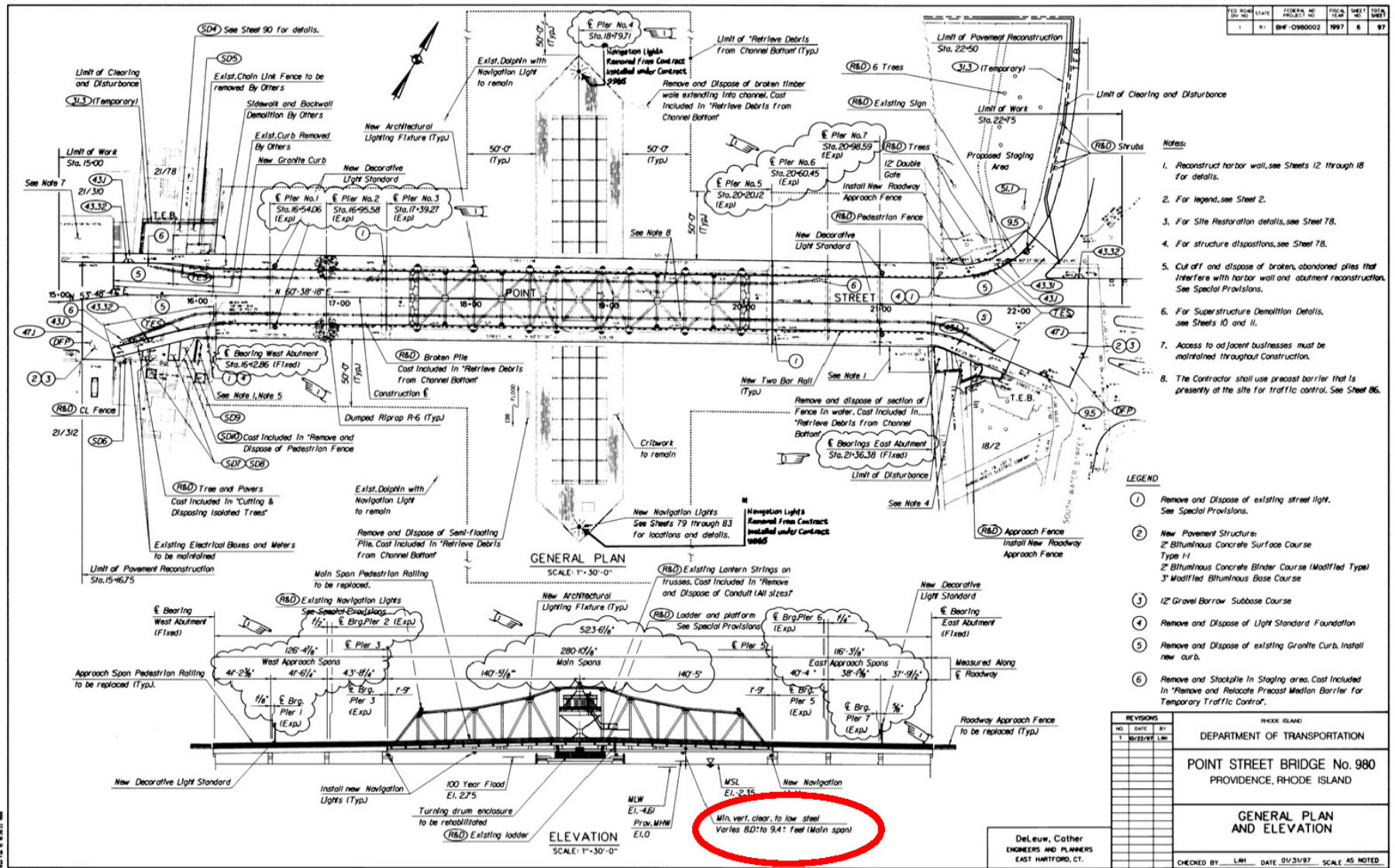
SCHEDULE MOVING FORWARD – NEXT STEPS

Lambri Zerva, Rhode Island Department of Transportation

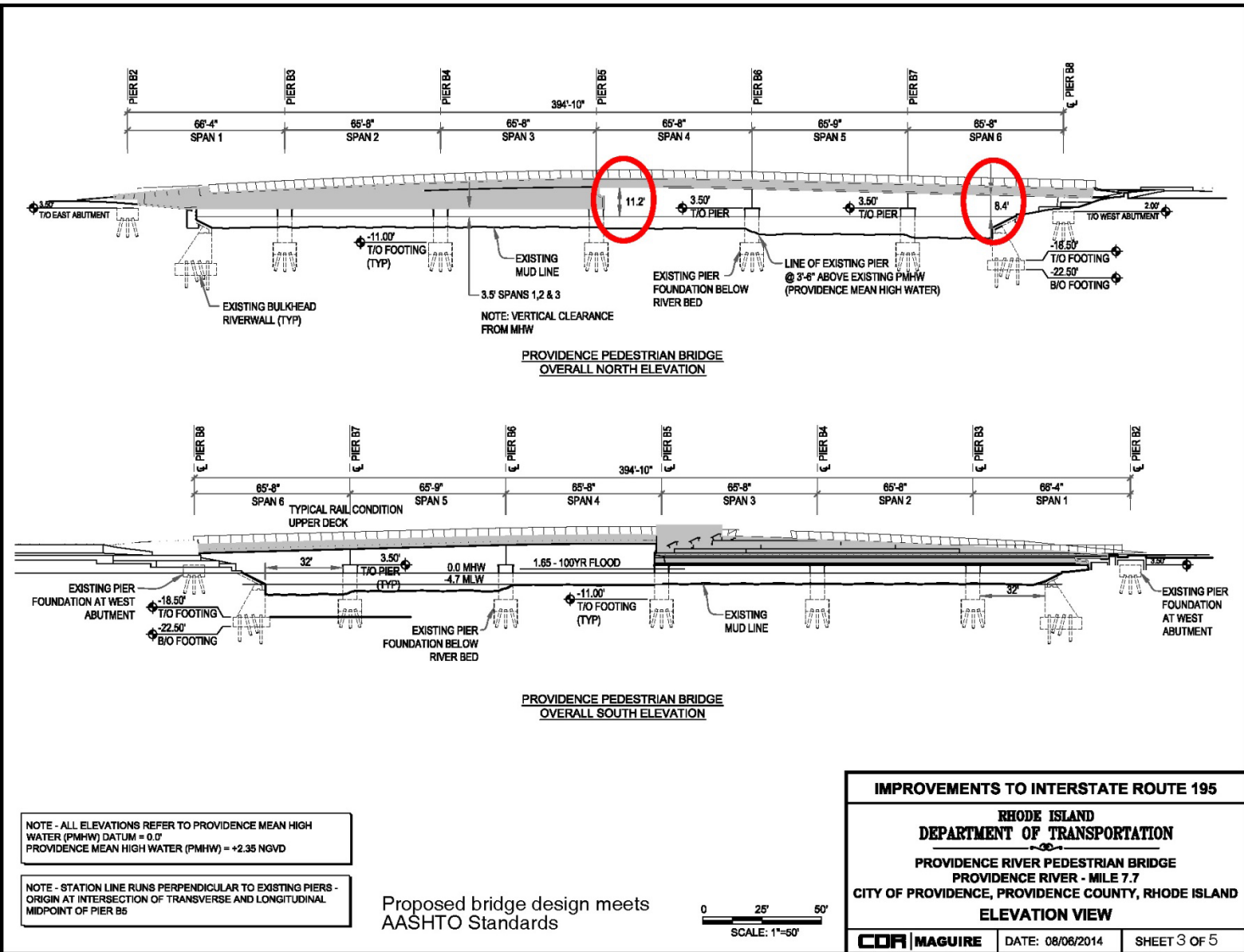
QUESTIONS? COMMENTS?



PLAN + ELEVATION VIEWS



ELEVATION VIEW

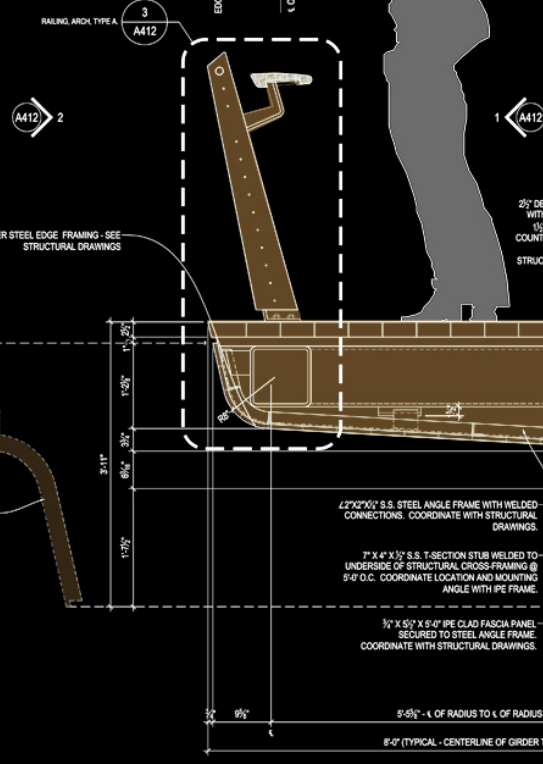


[illegible]

RAILING ARCH TYPE A
WITH PE WOOD GUARD RAIL

REMOVABLE 9'-0" WIDE SECTION OF 1/2" THICK PE CLADDING SECURED TO STEEL ANGLE FRAME. COORDINATE WITH STRUCTURAL DRAWINGS.

PE DECK WITH STAINLESS STEEL FASTENERS OVER PE SLEEPERS @ 3'-0" O.C.



RAILING ARCH, TYPE A
WITH PE WOOD GUARD RAIL

3" X 5" X 8' 0" PIPE CLADDING SECURED TO STEEL
ANGLE FRAME. COORDINATE WITH STRUCTURAL
DRAWINGS.

PIPE DECK WITH STAINLESS STEEL FASTENERS OR
PIPE SLEEPERS @ 8' 0" O.C.

