

Rhode Island 2025 Climate Action Strategy and CCAP

Kickoff Meeting

January 9, 2025

[bw] RESEARCH PARTNERSHIP



Lighthouse Consulting Group, Inc.



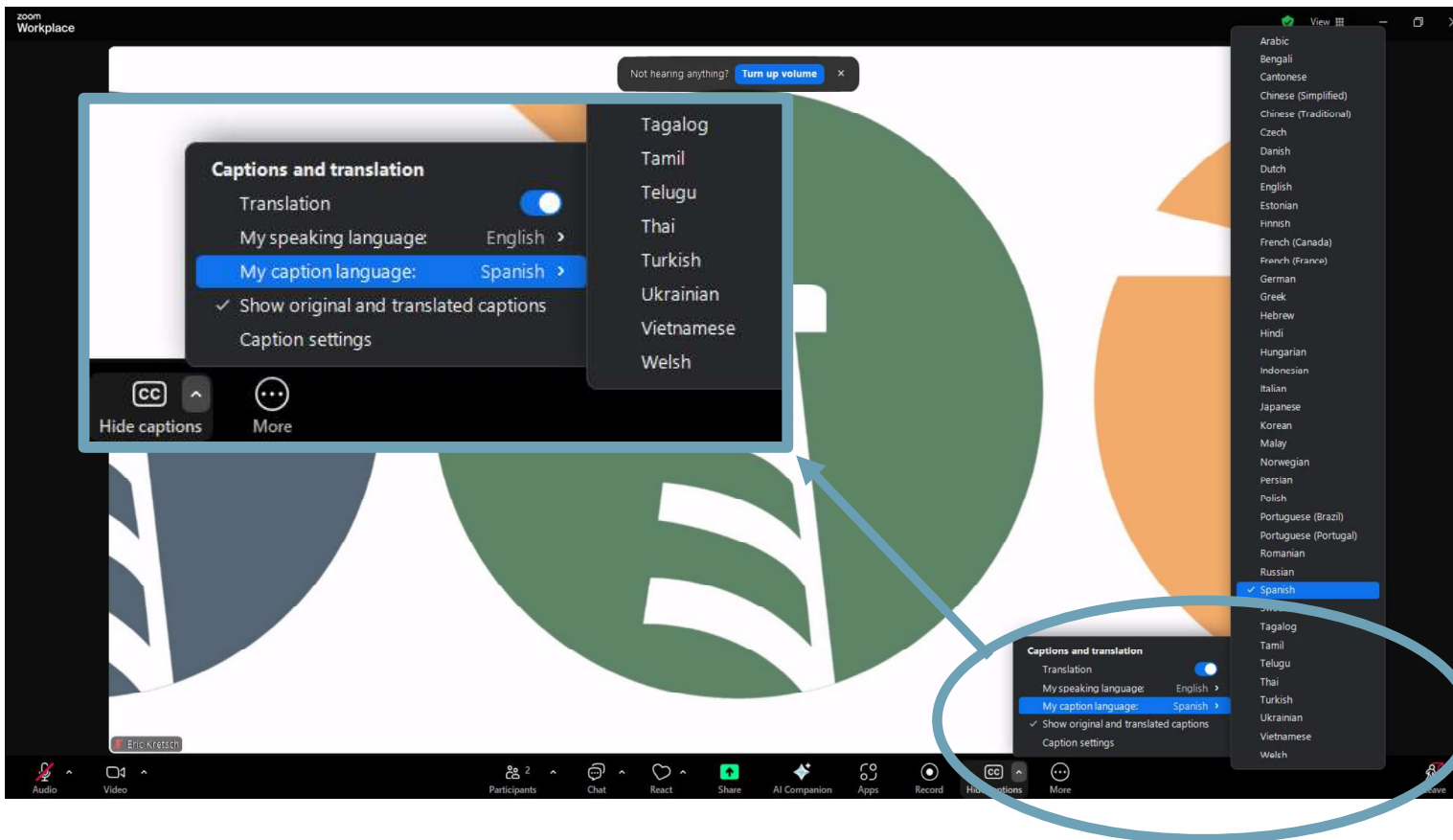
Energy+Environmental Economics

Eric Kretsch, Lighthouse
Chelsea Petrenko, E3
Molly Bertolacini, E3



Translated Closed Caption (CC) Available

Acceso a subtítulos traducidos



- + Click on Closed Caption “CC” icon
- + Set “Speaking Language”
- + Set “Caption Language”

Para Español:

- + Haz clic en el icóno “CC” para los subtítulos
- + Haz clic en “My speaking language” y selecciona “Spanish”
- + Haz clic en “My caption language” y selecciona “Spanish”



Energy+Environmental Economics

Welcome and Opening Remarks

Introductions



Energy and Environmental Economics (E3)



Dan Aas
Project Partner



Chelsea Petrenko
Project Lead



Molly Bertolacini
Project Manager



Rawley Loken
Technical Lead



Dan Alberga
Analyst



Lighthouse Consulting Group



Mark Amaral
Lead Facilitator



Eric Kretsch
Sr. Associate Facilitator



BW Research Partnership



Cai Steger
Project Manager



Mitch Schirch
Modeling Specialist

Goals

- + Provide the policy background motivating the Climate Action Strategy.
- + Explain the role of this project in achieving those goals.
- + Introduce the project, including the project team, tasks to be completed, the project timeline, and opportunities for you to engage.
- + Receive initial feedback on policy background, project, and the engagement plan.
- + Received feedback on proposed topic areas for engagement.

Agenda

- + Welcome and introductions**
- + Policy background & summary**
- + Project overview**
- + Breakout group activity**
 - Introduction to modeling toolkit
 - Discussion of proposed stakeholder engagement plan
 - Discussion of focus areas for engagement
- + Wrap-up and next steps**

Ground rules and guidelines to participation



+ This workshop is being recorded so we can accurately capture your comments. We do not intend to post this recording publicly.



+ Power off other electronics and mute yourself to limit distractions.



+ Make space and take space. Be mindful of how much airtime you take, but we encourage you to voice your support and concern.



+ There are multiple ways to participate:

- Raise your hand to be called on
- Use the chat feature
- Utilize the Survey Monkey Form, so that we capture all you have to say.



+ Thank you in advance for your participation.

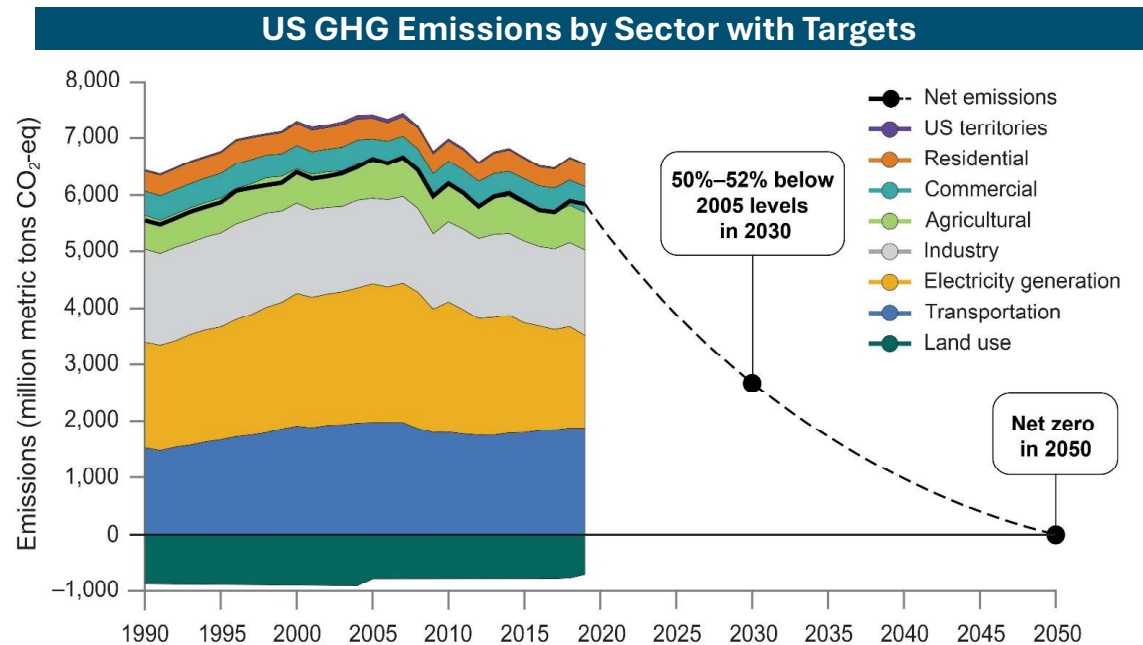
Policy Background & Summary



Energy+Environmental Economics

Motivation for Climate Action

- + **Greenhouse gases (GHG) contribute to rising temperatures when released into the atmosphere, causing climate change**
 - Climate change threatens human health and ecosystems
 - The negative effects of climate change disproportionately impact low-income and disadvantaged communities
- + **The production and consumption and fossil fuels is the primary contributor to global GHG emissions**
- + **Many U.S. states are working towards achieving GHG reduction targets to slow the effects of climate change**



Climate Planning in Rhode Island

- + On April 14, 2021, RI Governor Dan McKee signed into law the 2021 Act on Climate, setting mandatory climate GHG reduction targets:
 - 45% below 1990 emissions levels by 2030
 - 80% below 1990 emissions levels by 2040
 - “Net zero” by 2050
- + As required by the Act on Climate, the Executive Climate Change Coordinating Council (EC4) submitted an update to the 2016 Greenhouse Gas Emissions Reduction Plan in 2022
 - The next step in the implementation of RI’s Act on Climate is the 2025 Climate Action Strategy, due at the end of 2025
- + At the same time, RI Department of Environmental Management (RIDEM) has been awarded a planning grant through the EPA Climate Pollution Reduction Grant (CPRG) program
 - The first step was completing a **Priority Climate Action Plan** which focused on a list of near-term and high-priority GHG reduction measures
 - The next step in CPRG is the development of a **Comprehensive Climate Action Plan (CCAP)**. The CCAP is also due to be completed at the end of 2025.

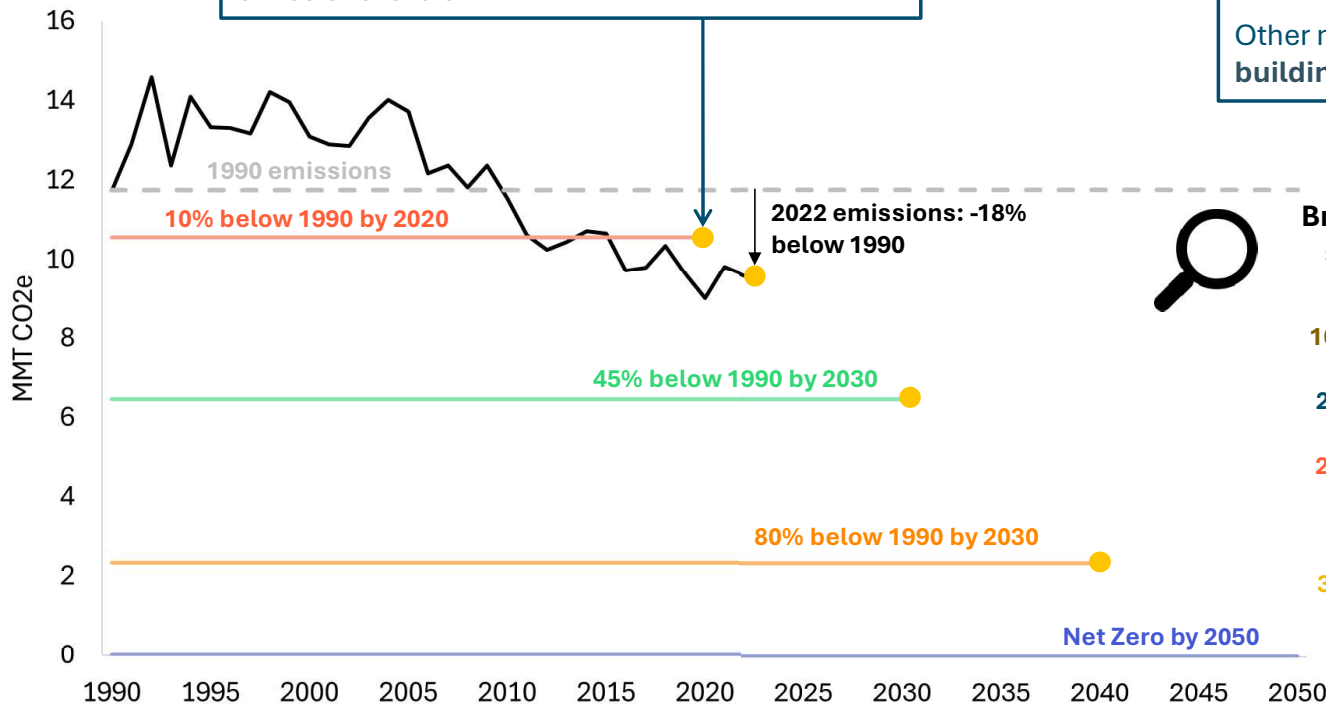


RI Greenhouse Gas (GHG) Inventory

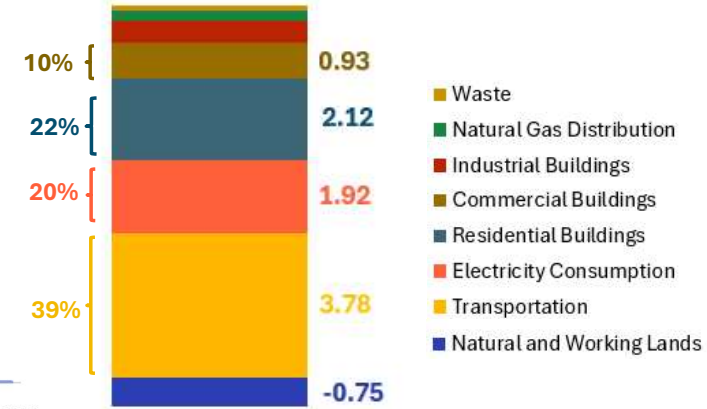
Rhode Island has made significant progress in reducing in-state GHG emissions, and have met their 2020 mandate of 10% reduction from 1990 emissions levels

As of 2022, **transportation** is the largest source of Rhode Island's GHG emissions (nearly 40%) with the majority caused by passenger vehicles.

Other major contributors include **residential buildings** (22%) and **electricity consumption** (20%)



Breakdown of RI emissions by sector in 2022 (MMT CO₂e)



Other Ongoing Studies and Engagement Opportunities

+ Future of the Regulated Gas Distribution Business

- The Future of Gas docket will continue to explore the future of RI's natural gas distribution system in the face of the mandates outlined in the Act on Climate
- Led by the RI Public Utilities Commission

+ Statewide Resilience Strategy

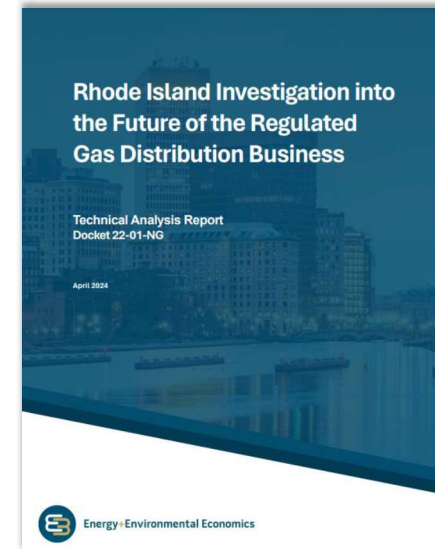
- Pursuant to the Act on Coasts adopted in 2024, RI will develop a new statewide resilience strategy due in Dec. 2025.
- Led by DEM's Chief Resilience Officer and the RI Infrastructure Bank

+ Building Decarbonization

- In response to a Joint Resolution adopted by the General Assembly in early 2024, there will be discussions and outreach on building decarbonization in early 2025 and likely throughout the 2025 legislative session.

+ Climate Change Engagement Grants

- The six community organizations which received funding from DEM to engage their constituents on topics related to reducing RI's greenhouse gas emissions will be continuing their work into 2025 with additional engagement opportunities



RIEC⁴

Project Overview



Energy+Environmental Economics

Project Goals

The overarching goal of this project is to create the RI Comprehensive Climate Action Plan (CCAP) for the Climate Pollution Reduction Grant (CPRG) program and the RI 2025 Climate Action Strategy as part of RI's Act on Climate

+ The RI CCAP and RI 2025 Climate Action Strategy will consist of:



- Robust stakeholder engagement
- GHG reduction measures modeling and sector-specific GHG target development
- Policy, technology and cost analyses
- Macroeconomic, workforce, climate resilience, and benefits analysis

+ Key elements of each plan will include:

- Energy efficiency in buildings and transportation
- Transition away from fossil fuel
- Transition to renewable electric power
- The removal of carbon from the air through land use and forest conservation
- A just transition for workers
- Benefits to environmental justice and low-income disadvantaged communities (LIDAC)



Project Team Roles and Responsibilities

Lead organization >>	E3	BW Research	Lighthouse Consulting
Task 1: Define Model Inputs and Project Kickoff			
Task 2: Public Engagement and Interagency Coordination			
Task 3: Deep Decarbonization Planning Analysis			
Task 4: Macro-Economic, Workforce, and Benefits Analysis			
Task 5 & 6: Plan development and rollout			

Preliminary Project Timeline

Tasks	Q4 2024	Q1 2025	Q2 2025	Q3 2025	Q4 2025	Q1 2026
Task 1: Define Model Inputs and Project Kickoff		Project kickoff	Final modeling inputs			
Task 2: Public Engagement and Interagency Coordination	Draft Engagement plan	Stakeholder meetings	Stakeholder meetings	Stakeholder meetings	Stakeholder meetings	
Task 3: Deep Decarbonization Planning Analysis		Policy and tech analysis	Draft Pathways results	Final Pathways results		
Task 4: Macro-Economic, Workforce, and Benefits Analysis				Task 4 memos		
Task 5: Produce Final CCAP Report and Elements of RI 2025 Climate Action Strategy				Draft reports	Final reports	
Task 6: Roll-Out of Final Deliverables						Roll-out all results

Draft Stakeholder Engagement Plan for Feedback

Facilitated Meeting Schedule





Energy+Environmental Economics

Questions?

Breakout Activity Background



Energy+Environmental Economics

5 Pillars of Decarbonization Needed to Achieve Net Zero GHGs

Net zero by 2050



Energy Efficiency & Conservation

Building efficiency & conservation

Fuel economy & smart growth

Industrial efficiency



Low Carbon Electricity

Renewables, storage and hydroelectric

Nuclear

Generation w/ carbon capture & storage



Electrification

Vehicle and freight electrification

Building electrification

Industrial electrification



Low Carbon Fuels

Biofuels

Carbon-neutral synthetic fuels

Hydrogen



Sequester Carbon & Reduce Non-Combustion GHGs

Soil CO₂ sinks, land management

Direct air capture of CO₂

Reduce methane, F-gases, N₂O

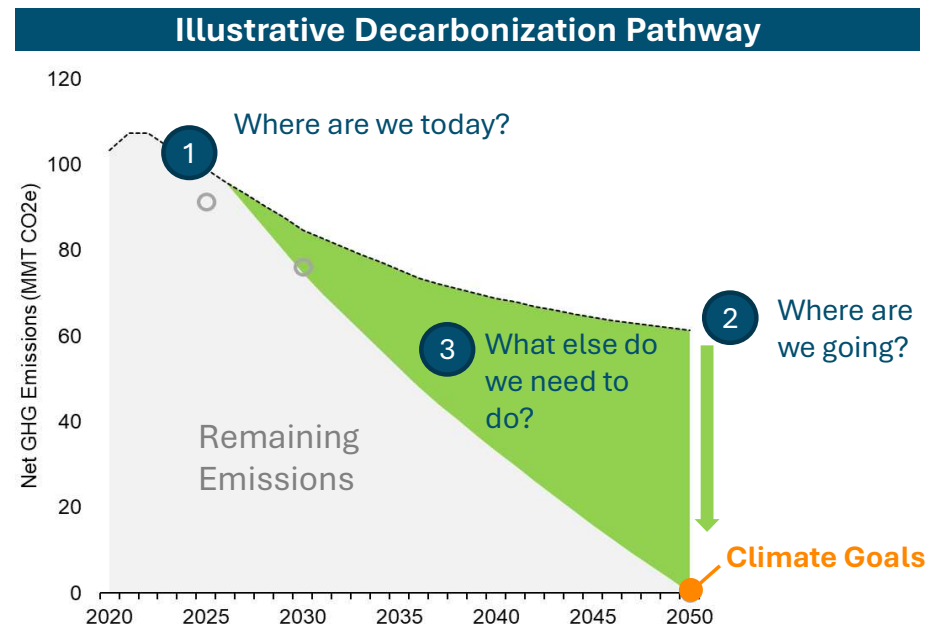
Intro to Decarbonization Pathways Modeling

+ All decarbonization pathways models follow 3 key steps

1. **Where are we today?** GHG inventory across all relevant sectors
2. **Where are we going?** Emissions impact of current policies
3. **What else do we need to do?** Additional measures needed to hit GHG reduction goals

+ In this project we will...

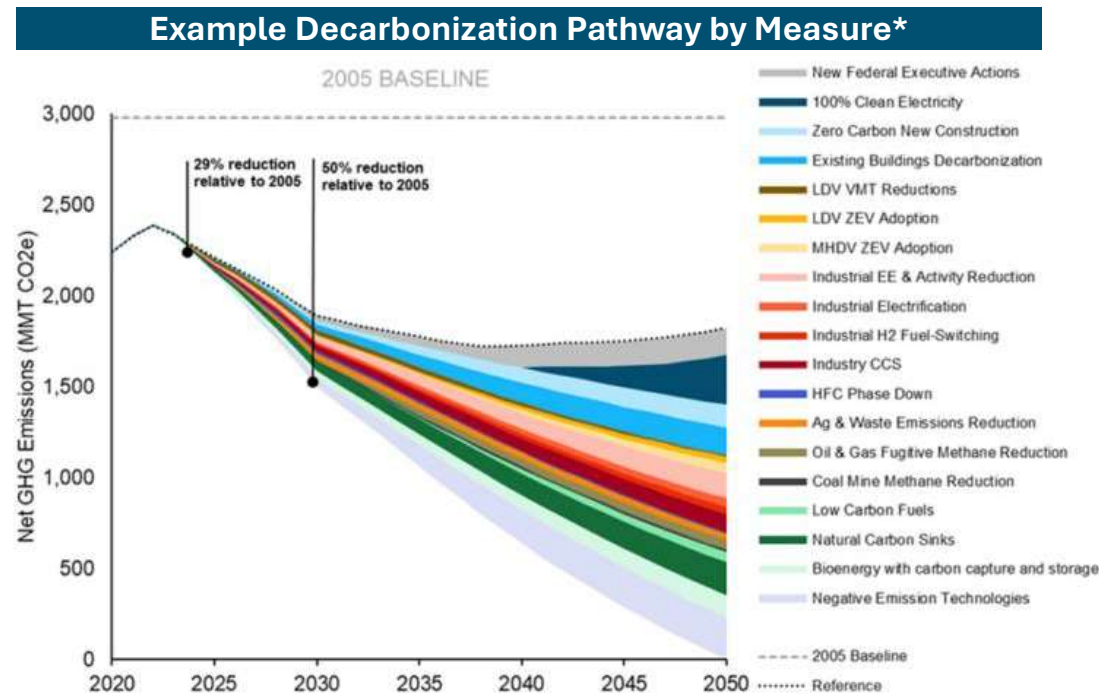
- Use RI's existing 2022 Inventory to measure today's emissions
- Develop a BAU scenario (i.e., how far current policy will take us)
- Design one or more decarbonization scenarios based on additional GHG reduction measures



E3 and BW's Decarbonization Modeling Toolkit

+ The project team's modeling toolkit allows us to explore...

- The emissions impact of **GHG reduction measures**
- Changes in **energy use and emissions** by sector
- The **role of different sectors** in reaching economy-wide goals
- Changes in **infrastructure** and the **pace of the transition**
- Customer costs and affordability impacts
- Workforce impacts
- The benefits of decarbonization, such as air quality improvements



* GHG reduction measures refer to discrete strategies that reduce emissions, such as electric vehicle adoption, building electrification, etc.

Proposed Topic Areas for Engagement

How will climate mitigation efforts effect jobs, workforce and businesses?
How can RI ensure a just transition as the economy decarbonizes?

Workforce*



What are the most effective strategies to ensure the communities most affected by climate change benefit from GHG reduction measures?

EJ, equitable transition*



What role do electric and gas utilities play in reducing electricity and gas related emissions?

Energy



What measures should be prioritized to reduce transportation emissions, which are the biggest contributor to RI's GHG emissions?

Transportation



What is the role of municipalities in decarbonizing RI's economy?

Municipalities



What pathways for reducing building related emissions should be prioritized?

Buildings



Breakout Group Activity



Energy+Environmental Economics

Questions for Breakout Groups

- + Looking at the six proposed focus areas, do you feel these are the right areas to focus on?**
- + If not, what adjustments or additions would you suggest to better align with your goals?**
- + Are there any topics you feel should be prioritized?**



Energy+Environmental Economics

Report Out

Wrap-up and Next Steps

+ Next steps:

- Slides from this meeting will be available at: climatechange.ri.gov
- Focus of future stakeholder meetings will be re-evaluated based on today's breakout room discussions
- E3 will share draft modeling inputs and assumptions for initial stakeholder feedback in the first half of February
- Action Plan Development stakeholder meetings will begin in February

Staying in the Loop on the 2025 Strategy

Sign up to receive ongoing announcements about engagement on the RI 2025 Climate Action Strategy [HERE](#) or follow the below QR code



Sign up for updates!

Get the latest updates from the Executive Climate Change Coordinating Council (EC4) in your inbox.



Subscribe



Thank You

Chelsea Petrenko: chelsea.petrenko@ethree.com

Eric Kretsch: ekretsch@lighthousecg.com

Molly Bertolacini: molly.bertolacini@ethree.com



Energy+Environmental Economics